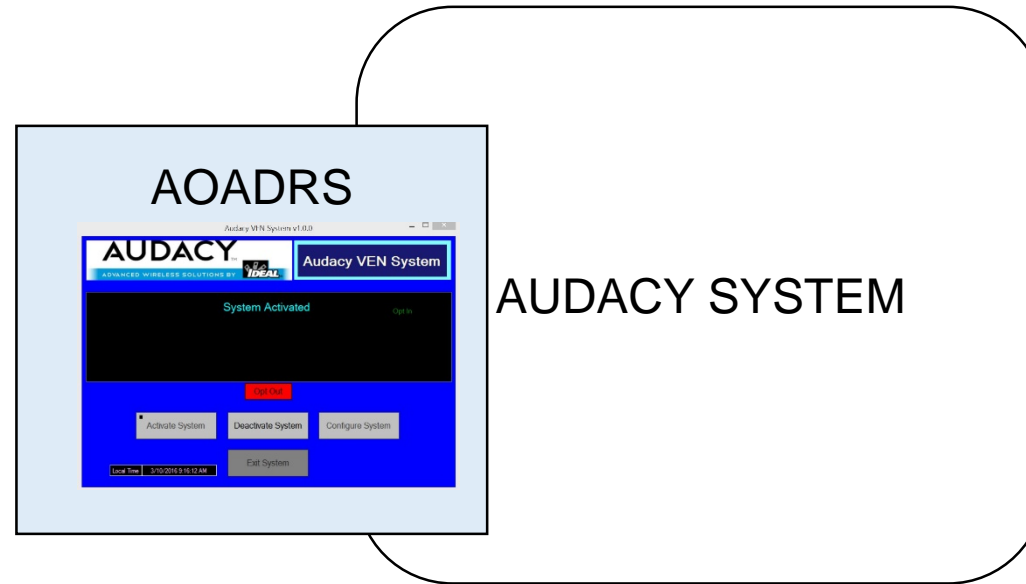


Audacy VEN System v1.0.0



Description

The Audacy VEN System (AVS) is an OpenADR 2.0a compliant Virtual End Node (VEN). AVS is an integral part of the Audacy System which works with an OpenADR 2.0a Demand Response Automation Server (DRAS). When an OpenADR event comes in through the AVS it gets translated into a load adjustment for the Audacy System.

Key Features

- ✓ Audacy VEN System v1.0.0 is OpenADR 2.0a PULL ready
- ✓ AVS works with a single OpenADR Event
- ✓ AVS Polling rates range from 8 Seconds to up to 4 Hours
- ✓ AVS supports Normal, Low, Moderate and Special Levels
- ✓ AVS supports TLS 1.2 and RSA Secure Communications
- ✓ AVS is easy to Deploy, Configure and Maintain
- ✓ AVS is Windows ready and is co-located with the Proxy

Starting Audacy VEN System

- From the C:\aoadrs location execute AudacyVENSystem.exe. See Figure 1.0.

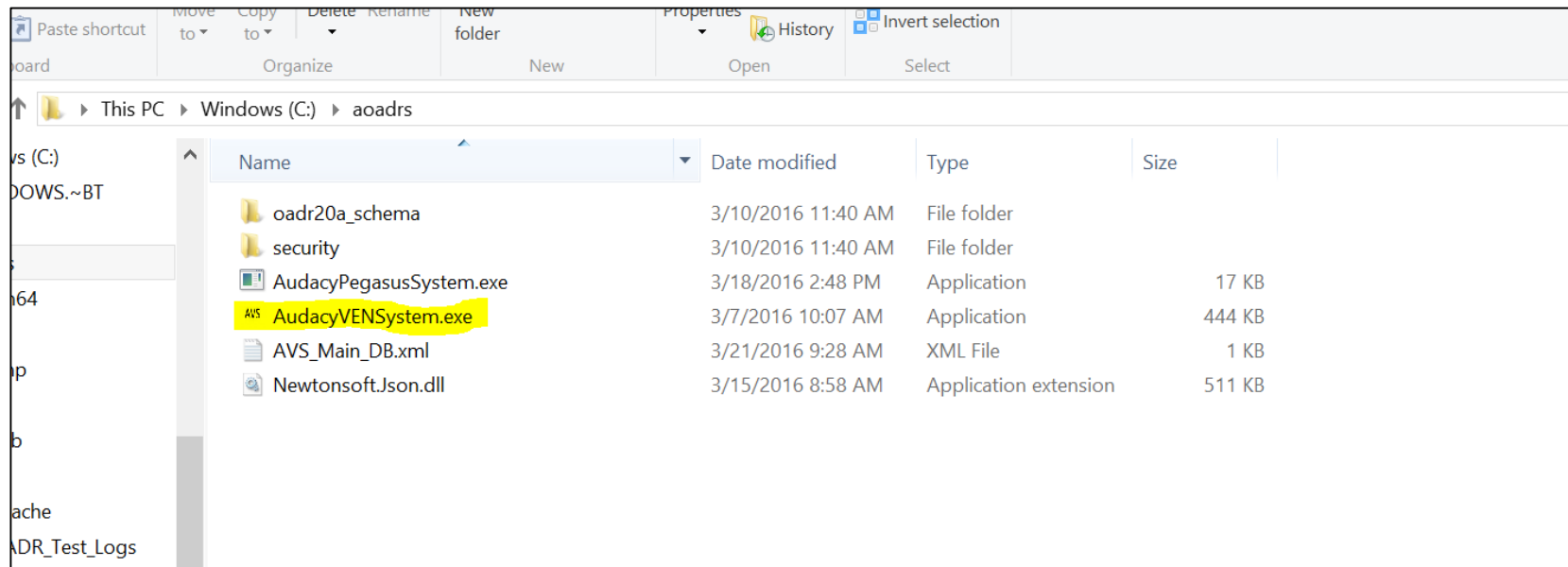


Figure 1.0

Starting Audacy VEN System

- When AVS starts, enter the Passkey and click 'Configure System'. See Figure 2.0. The Passkey is required to run the AVS.

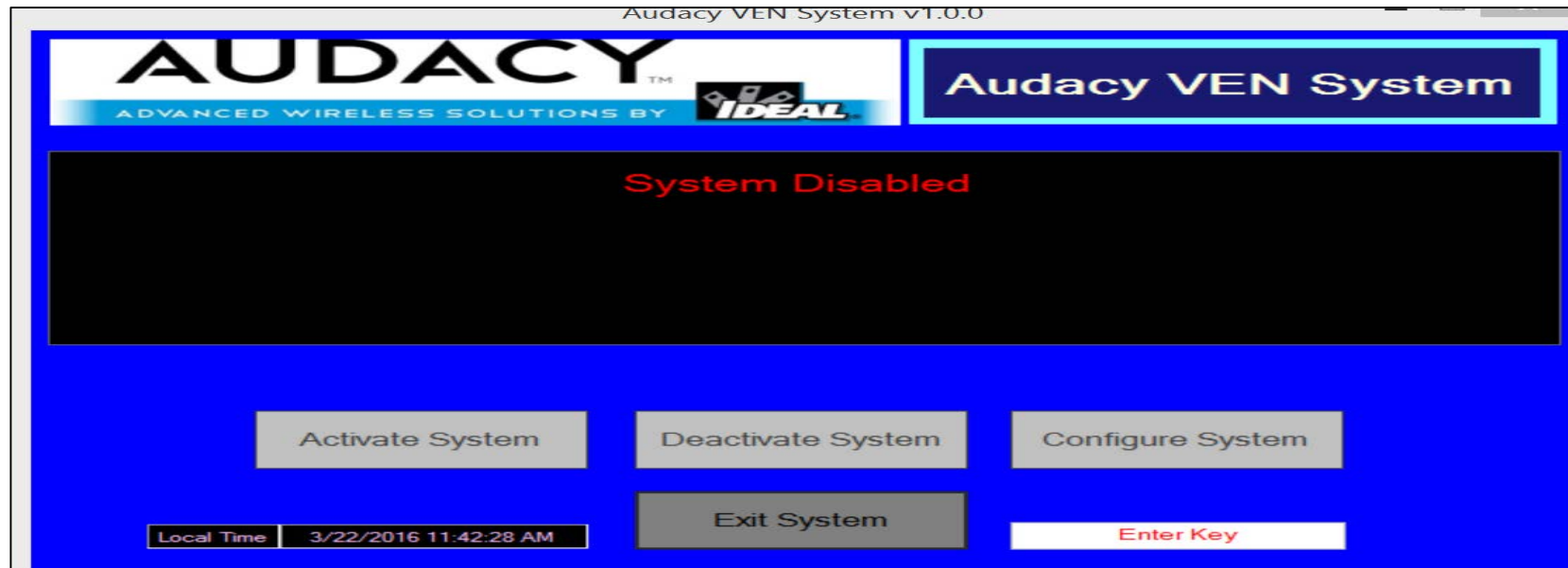
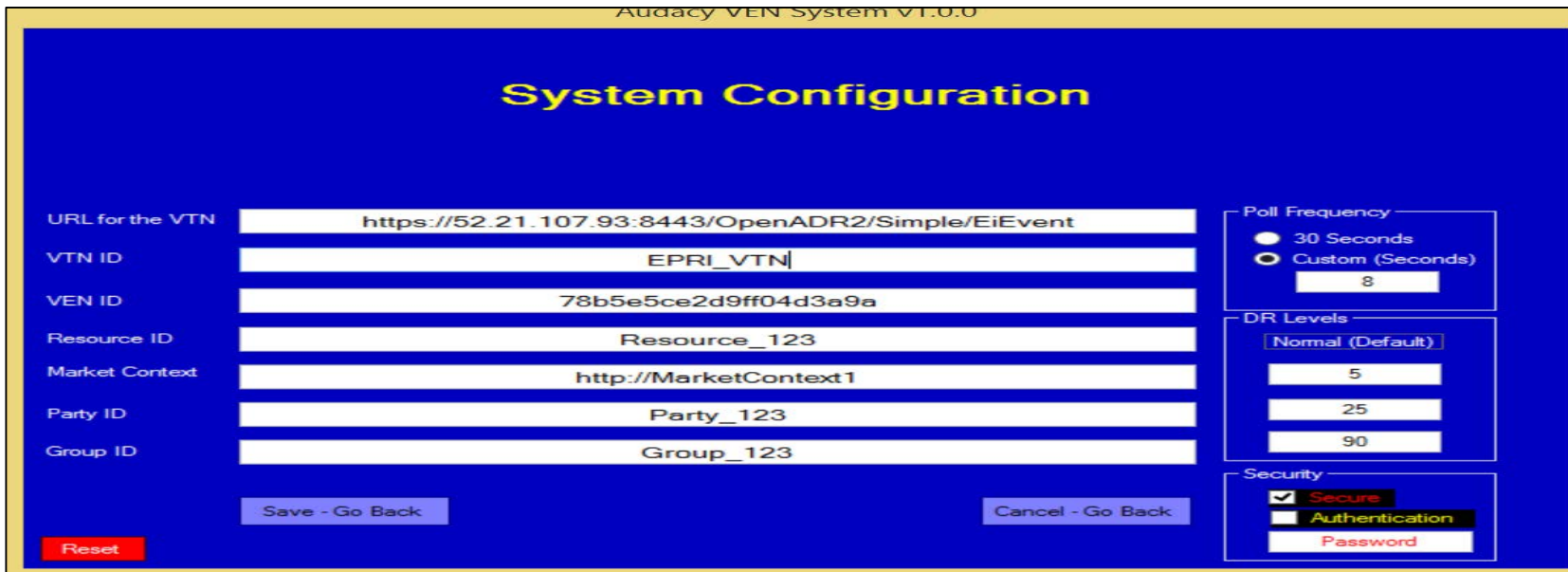


Figure 2.0

Starting Audacy VEN System

- On the configuration page, enter all relevant information and click ‘Save – Go Back’. See Figure 3.0.



Audacy VEN System V1.0.0

System Configuration

URL for the VTN	<input type="text" value="https://52.21.107.93:8443/OpenADR2/Simple/EiEvent"/>	Poll Frequency <input type="radio"/> 30 Seconds <input checked="" type="radio"/> Custom (Seconds) <input type="text" value="8"/>
VTN ID	<input type="text" value="EPRI_VTN"/>	
VEN ID	<input type="text" value="78b5e5ce2d9ff04d3a9a"/>	
Resource ID	<input type="text" value="Resource_123"/>	
Market Context	<input type="text" value="http://MarketContext1"/>	
Party ID	<input type="text" value="Party_123"/>	
Group ID	<input type="text" value="Group_123"/>	
<input type="button" value="Reset"/> <input type="button" value="Save - Go Back"/> <input type="button" value="Cancel - Go Back"/>		DR Levels <input type="text" value="Normal (Default)"/> <input type="text" value="5"/> <input type="text" value="25"/> <input type="text" value="90"/>
		Security <input checked="" type="checkbox"/> Secure <input type="checkbox"/> Authentication <input type="text" value="Password"/>

Figure 3.0

Running Audacy VEN System

- On the main page, click 'Activate System' when ready. See Figure 4.0.



Figure 4.0

Support

Audacy VEN System is easy to use and utilizes components to help it function effortlessly. However, if you still need further assistance then please contact Audacy System's Support Team.

contactus@audacywireless.com

800-273-9989

Thank You.